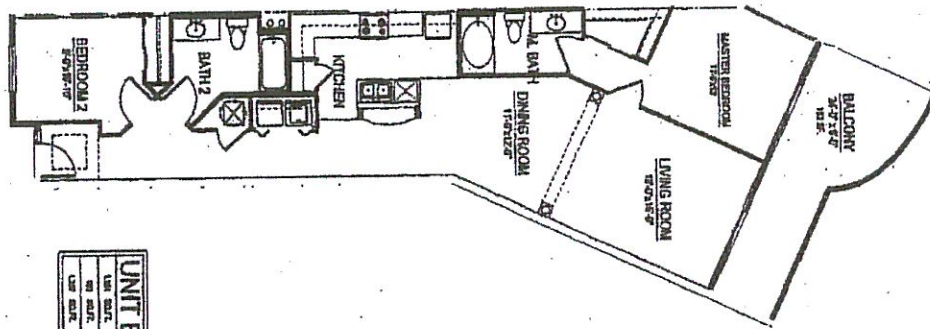
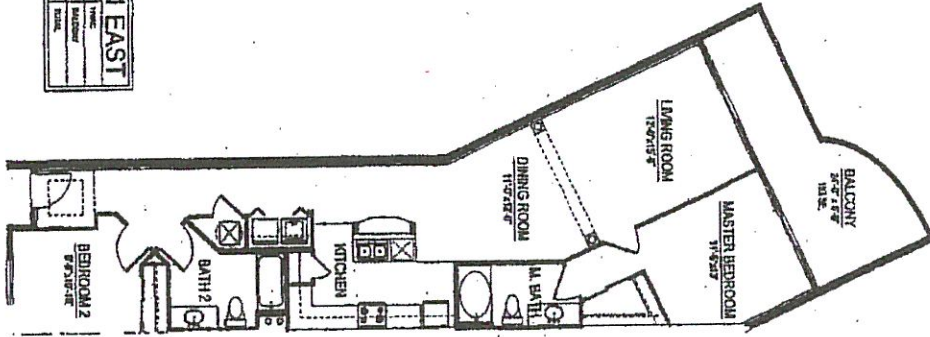


UNIT B1 EAST			
UNIT NO.	1501	TYPE	STUDIO
NO. OF UNITS	1	NO. OF BATHS	1
NO. OF BEDS	1	NO. OF KITCHENS	1



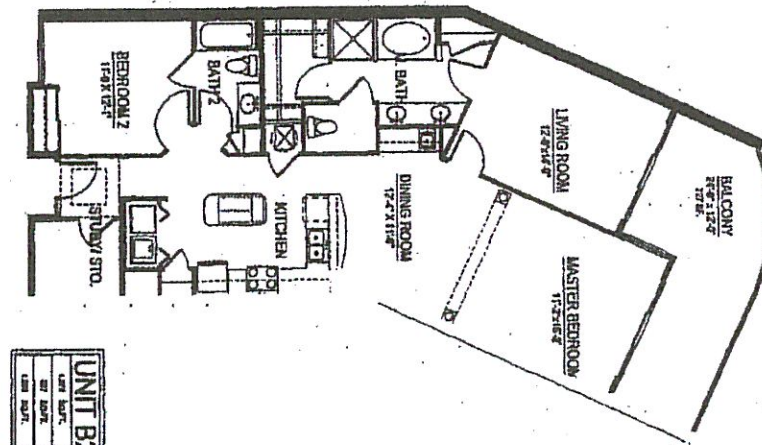
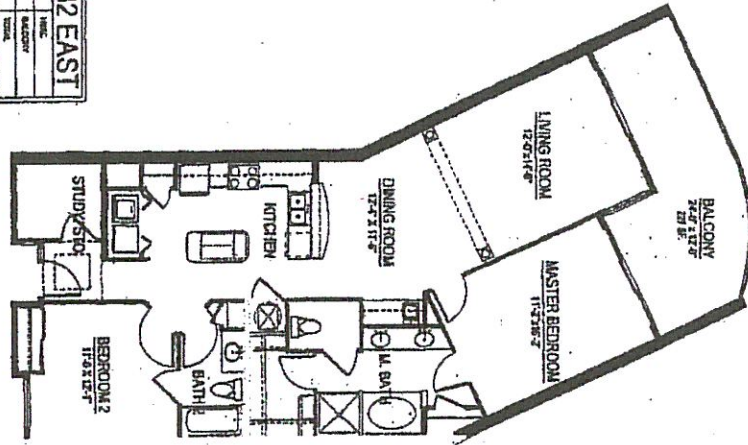
UNIT B1 WEST			
UNIT NO.	1502	TYPE	STUDIO
NO. OF UNITS	1	NO. OF BATHS	1
NO. OF BEDS	1	NO. OF KITCHENS	1


HUMPHREYS & PARTNERS ARCHITECTS / FLORIDA LLC.
 201 WEST GORHAM AVENUE, SUITE 200
 MIAMI, FL 33136
 (305) 371-1111


LEGACY MITCHELL
 GULFPORT CONDOMINIUM TOWERS PHASE II
 The Mitchell Company
 1501 TATES & BOND CONSTRUCTION COMPANY
 GULFPORT, MISSISSIPPI

15

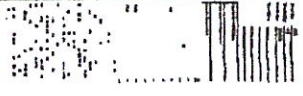
UNIT B2 EAST			
UNIT NO.	1202	UNIT NO.	1202
UNIT NO.	1202	UNIT NO.	1202
UNIT NO.	1202	UNIT NO.	1202



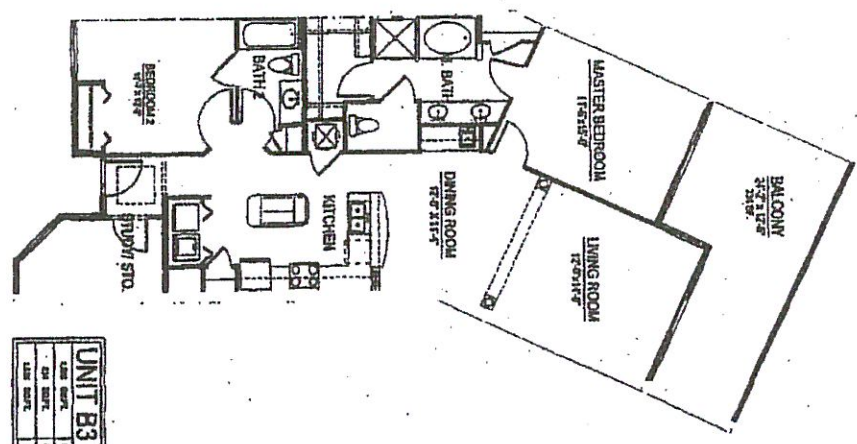
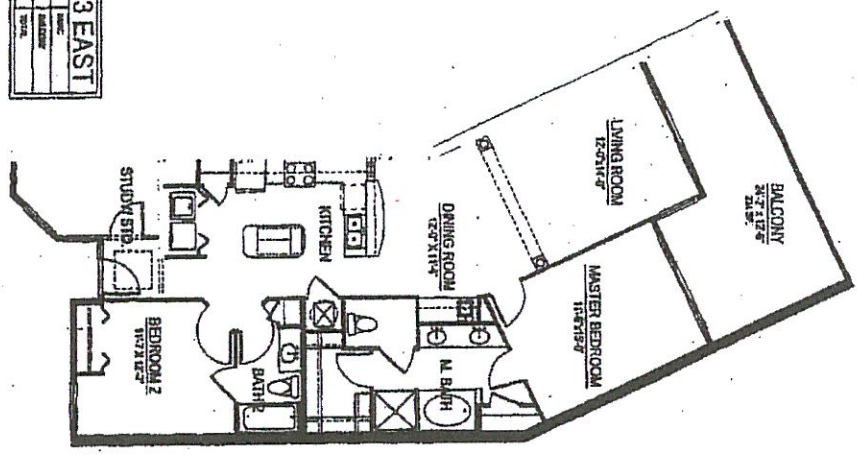
UNIT B2 WEST			
UNIT NO.	1201	UNIT NO.	1201
UNIT NO.	1201	UNIT NO.	1201
UNIT NO.	1201	UNIT NO.	1201

HUMPHREYS & PARTNERS ARCHITECTS / FLORIDA L.L.C.
 400 WEST WASHINGTON AVENUE, SUITE 1200
 MIAMI, FLORIDA 33135
 (305) 576-1100
 www.humphreys.com

LEGACY
 GULFPORT CONDOMINIUM TOWERS PHASE II
 The Mitchell Company
 W.G. YATES & SONS CONSTRUCTION COMPANY
 GULFPORT, MISSISSIPPI



UNIT B3 EAST			
UNIT NO.	101	NO.	101
UNIT AREA	1,177.12	NO.	101
UNIT NO.	101	NO.	101



UNIT B3 WEST			
UNIT NO.	102	NO.	102
UNIT AREA	1,177.12	NO.	102
UNIT NO.	102	NO.	102



**HUMPHREYS & PARTNERS
ARCHITECTS / FLORIDA LLC**
MEMBER OF THE ARCHITECTURAL FIRM
OF THE STATE OF FLORIDA
1000 N. GULF BLVD., SUITE 1000
GULFPORT, MISSISSIPPI 39503

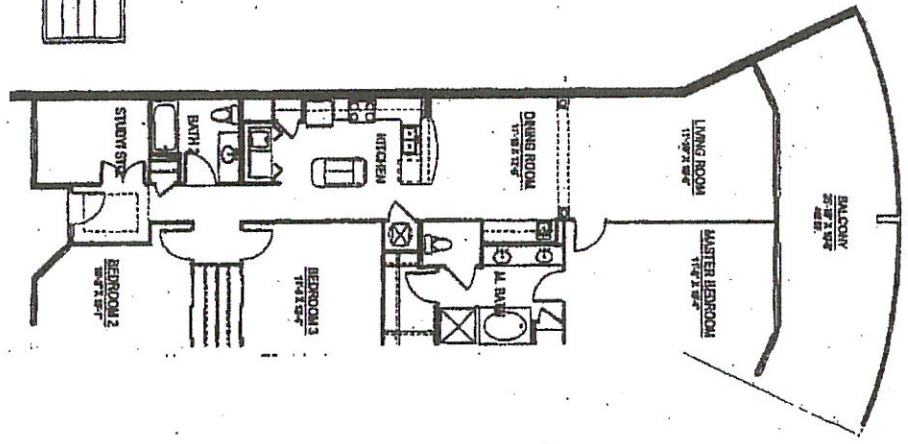



**LEGACY
CONSTRUCTION**
GULFPORT, MISSISSIPPI


**GULFPORT CONDOMINIUM
TOWERS PHASE II**
The Mitchell Company
A TRUST & REAL ESTATE COMPANY
GULFPORT, MISSISSIPPI

18

UNIT C1	
UNIT NO.	000
UNIT TYPE	CONDO
UNIT AREA	1,100
UNIT PRICE	1,100,000




HUMPHREYS & PARTNERS ARCHITECTS / FLORIDA L.L.C.
 100 WEST BAYVIEW AVENUE, SUITE 1000, MIAMI, FLORIDA 33134
 PHONE: 305.371.1111 FAX: 305.371.1112
 WWW.HUMPHREYS-PA.COM


LEGACY 2000
 REAL ESTATE DEVELOPMENT

GULFPORT CONDOMINIUM TOWERS PHASE II
 The Mitchell Company
 100 SOUTH BAYVIEW AVENUE, SUITE 1000, MIAMI, FLORIDA 33134
 PHONE: 305.371.1111 FAX: 305.371.1112
 WWW.MITCHELLCOMPANY.COM